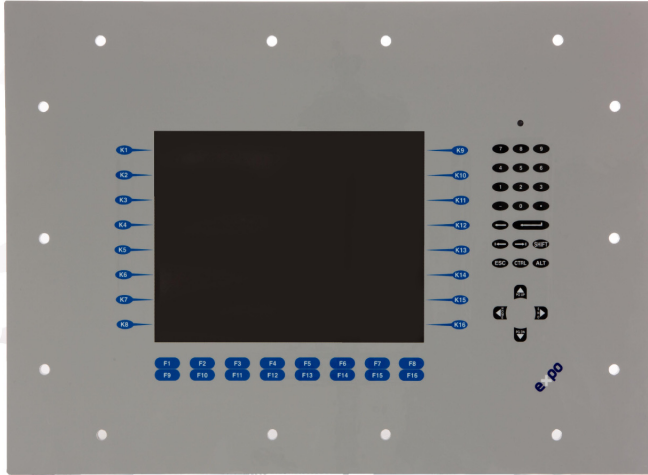


Operator Interface Adapters

IECEX/ATEX Zone 1 or 2 (21 or 22)
Suitable for Class I or II, Div 1 or 2



A typical Expo Technologies Operator Interface Adapter installation - here used by a manufacturer of gas separators - employs a NEMA 4 enclosure and Allen-Bradley's Panel-View interface

Overview

The Expo Technologies Operator Interface Adapter is used to allow regular operator interfaces to be used in hazardous locations.

It is used with Expo Technologies purging systems and suitable pressurized enclosures. The Adapter increases the classification of operator interfaces from non-classified to Class I, II, Div. 1, 2, Group A through G/IECEX/ATEX Zone 1, 2 (21 or 22) IIC, when used with a Purge and Pressurization system.

The Adapter provides water and dust protection, enables full functionality of operator interfaces/ keyboards, and allow viewing of enclosed monitor screens.

Adapters can be manufactured by Expo Technologies, for any operator interface including Allen-Bradley's Panel View series. Consult factory regarding use with other manufacturer's models.

Features

- + Mounts into the wall of standard pressurized panel
- + Comes complete with own gasket
- + When used with an approved Expo purge system, the design complies with the requirements of the NFPA 496 Standard and is included within the IECEX/ATEX Certificate to IEC/EN 60079-2 for pressurized enclosures issued to Expo Technologies by Intertek Testing & Certification Ltd, UK.



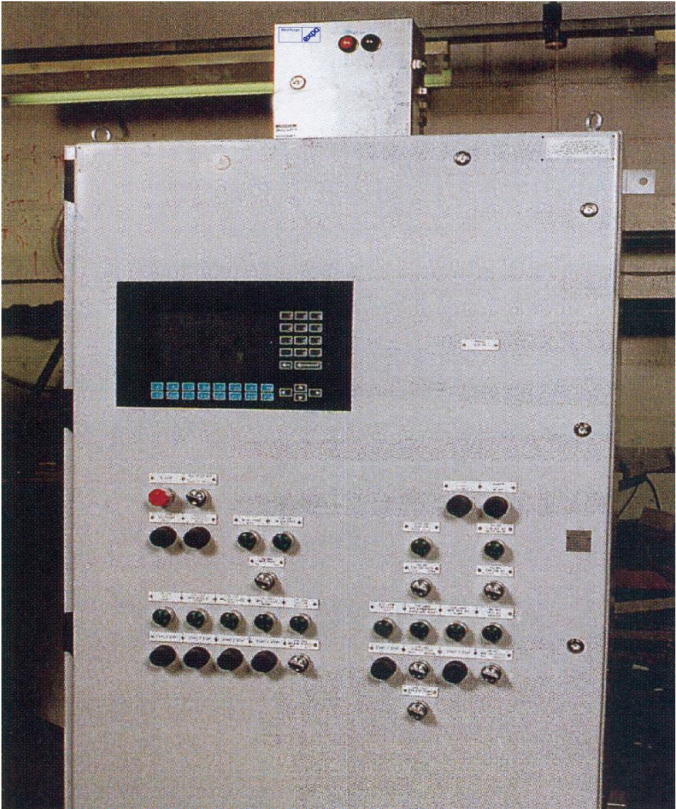
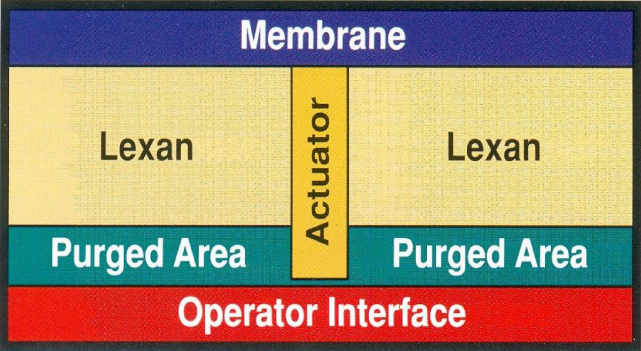
A typical Expo Technologies Adapter installation - here An Expo Technologies MiniPurge unit provides purging and pressurization between the Adapter and third-party panel interface.

TECHNICAL SPECIFICATION
OPERATOR INTERFACE ADAPTERS
GENERAL INFORMATION

OPERATING PRINCIPLE

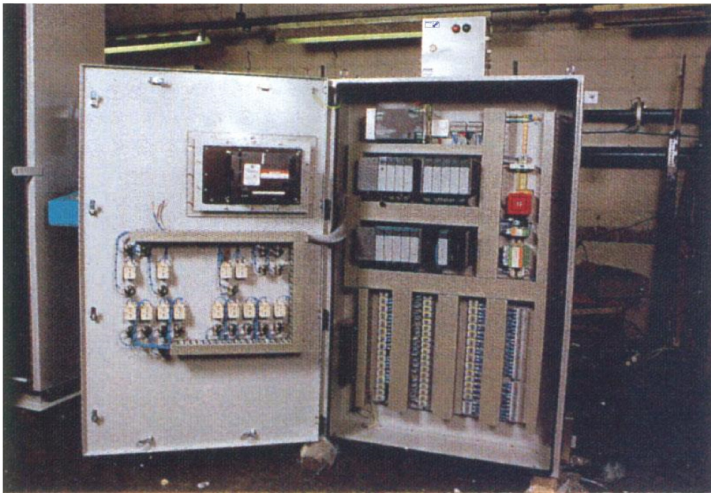
The design provides mechanical protection and pressurization containment, but still enables viewing and operation from the hazardous location. The membrane mimics the artwork of the original operator interface.

Hazardous Area



Allen Bradley 900 complete with the Expo Operator Interface Adapter installed in a Pressurized Enclosure. Class I Division 1 or for a Zone 1 & 2 (21 & 22) area.

Application Details		
For NEC Div. 1/ Zone 1 and IECEx/ATEX Zone 1/2 (21/22):	Purge with MiniPurge (NFPA X purge/IECEx/ATEX approved Control System)	
For NEC Div. 2/ Zone 2:	Purge with Mini-Z-Purge	
For NEC Div. 1/ Zone 1 and IECEx/ATEX Zone 1/2 (21/22):	Purge with Mini-Y-Purge	
Enclosure Pressure max:	10mbar	4"WC
Use with touchscreen	Not compatible - consult factory	



Allen Bradley 900 complete with the Expo Operator Interface Adapter installed in a Pressurized Enclosure. Class I Division 1 or for a Zone 1 & 2 (21 & 22) area.



Purge + Pressurization + Innovation
www.expoworldwide.com

Expo Technologies reserve the right to amend data given here without prior notice.
©2015 Expo Technologies.